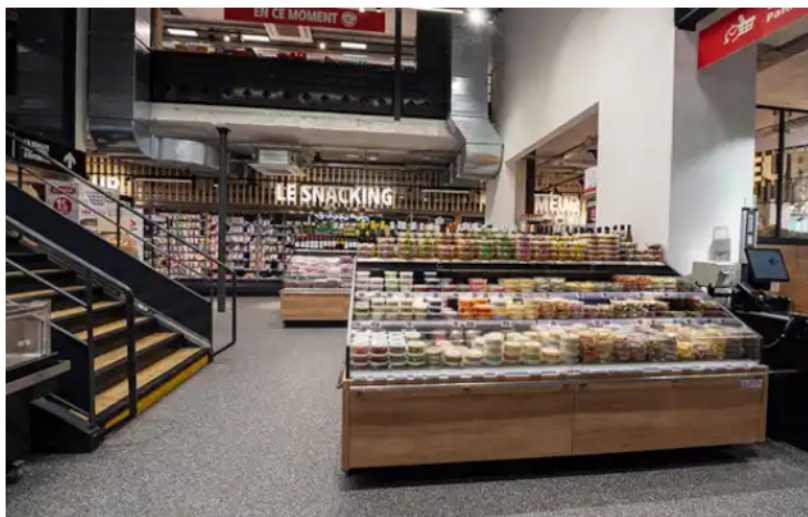


Epta cabinets chosen for Paris store conversion

02 April 2025



Epta equipment has been used throughout the new Paris store

Commercial refrigeration specialist Epta has outfitted a new Intermarké store on Rue Etienne Marcel, in the heart of Paris, using refrigerated cabinets from its Bonnet Névé brand.

The supermarket has been established within a historic post office building, following a conversion process that has preserved the essence and distinctive architecture of the site in the 2nd Arrondissement, just a stone's throw from the capital's main attractions.



Exterior of the Intermarché store on the bustling Rue Etienne Marcel

Cécile Marty, Trade Marketing Manager at Epta, said : “Intervening in a historic city-centre building not originally designated for commercial use posed a significant challenge, which was successfully overcome thanks to the responsiveness and problem-solving expertise of a team of specialists, whose skills were recognised and appreciated by the retailer at every stage of the project.

“The two-level layout of the 840 m² sales area, the reduced ceiling height on the second floor and the absence of a machine room naturally led to the choice of relying on the extensive range of Integral solutions by Bonnet Névé, which proved to be perfectly suited for this type of application, further supported by the contribution of Epta’s Energy Management division.”

The propane-based Integral solutions, operating on natural refrigerants, have a built-in refrigerated unit preassembled inside the cabinet, combining a modular approach and energy performance standards of remote cabinets with the ease of installation of plug-in units.

The Bonnet Névé Integral series takes centre stage in the store, featuring models designed to enhance the attractiveness and profitability of various departments, including fresh produce, delicatessen and frozen foods